

For the further development of stem cell research

# CultureSure™ CEPT Cocktail (1,000×)

CEPT is a cocktail of small molecules developed at the National Institutes of Health (NIH). It contains four compounds, and CEPT is an acronym for them: Chroman 1, Emricasan, Polyamines, and Trans-ISRIB. Compared to existing methods, CEPT also improves cell viability in stem cell research, including embryoid body and organoid formation, single cell cloning, and genome editing using hPSCs.<sup>1, 2, 3)</sup>

References

- 1) Chen, Y. *et al.* : *Nat. Methods*, **18** (5), 528 (2021).
- 2) Tristan, C.A. *et al.* : *Stem Cell Reports*, **16**, 3076 (2021).
- 3) Tristan, C.A. *et al.* : *Nat. Protoc.*, **18**, 58 (2022).

## Features

- Protects human ES/iPS cells from stresses including DNA damage, helping to **maintain cell structure and function**
- Filter-sterilized, **ready-to-use** cocktail solution
- One of the CultureSure series products that are **tested for endotoxin contamination and are mycoplasma negative**



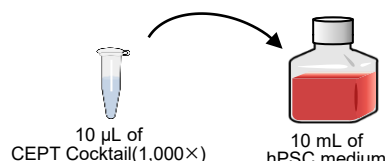
## Analytical Data

- Concentration (HPLC): Passed
- Appearance: Liquid
- Endotoxin: Less than 3 EU/mL
- Tested for sterility
- Tested for negative mycoplasma contamination

## How to Use

Add 1/1,000 volume of this product to the culture medium and mix thoroughly before use.

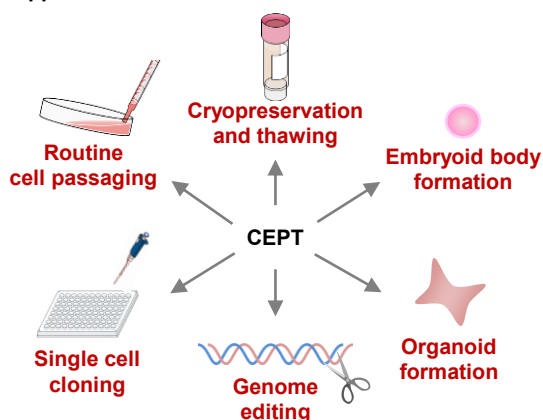
Note: To avoid repeated freezing and thawing, it is recommended to aliquot in small volumes and freeze.



## Samples and Applications

Samples: Human ES / iPS cells

Applications:



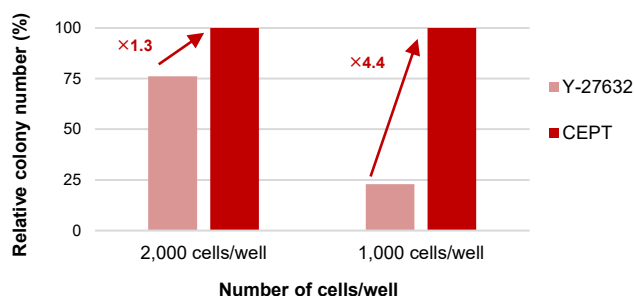
### Example of use: passaging of human iPS cells

1. Remove the medium from the culture dish (10 cm).
2. Add 5 to 10 mL of D-PBS(-) to the dish and rinse.
3. Remove D-PBS(-).
4. Add 2 to 5 mL of a cell dispersing agent.
5. Allow to stand in an incubator set to 5% CO<sub>2</sub>, 37 °C.
6. Add 10 mL of hPSC medium+CEPT
7. Disperse the hPSC colonies into single cells by pipetting.
8. Transfer the medium with dispersed cells into a tube.
9. Centrifuge the tube for 5 min at 200 x g, room temperature, and remove the supernatant.
10. Add 10 mL of hPSC medium+CEPT to the tube to suspend the cell pellet.
11. Count cells.
12. Seed an appropriate amount of hPSCs in a new culture dish previously containing hPSC medium+CEPT.
13. Culture in an incubator set to 5% CO<sub>2</sub>, 37 °C.
14. The following day, replace the medium with hPSC medium without CEPT.

Wako Cat. No.	Product Name	Grade	Package Size
033-26071	CultureSure™ CEPT Cocktail (1,000×)	For Cell Culture	300 µL

## Performance data

### Colony Formation Test

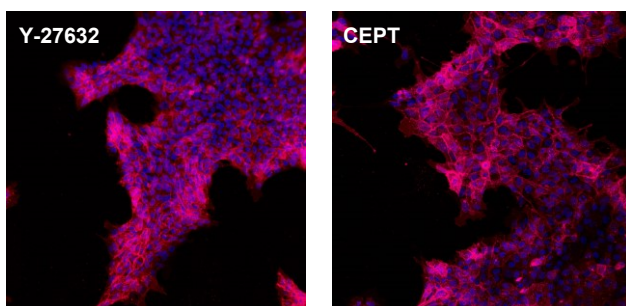


Cell strain	human iPS cell 201B7
Medium	StemSure® hPSC Medium Δ containing 35 ng/mL bFGF
Coating	Matrigel® hESC-Qualified Matrix
Duration of Culture	8 days
Additives	Y-27632 or CEPT was added at the time of seeding. Cells were cultured without the addition from the following day onward.

#### Result

When the number of cells seeded was small, more colonies were formed in the CEPT-supplemented cultures than in the Y-27632-supplemented cultures.

### Undifferentiated State Maintenance



RED : rBC2LCN-635 (human iPS membrane stain)

BLUE : DAPI (nuclear stain)

Note: BC2LCN is a recombinant lectin with high affinity for cell surface glycans of human ES cells and human iPS cells.

Cell strain	human iPS cell 201B7
Medium	StemSure® hPSC Medium Δ containing 35 ng/mL bFGF
Coating	Matrigel® hESC-Qualified Matrix
Number of seeded cells	5,000 cells/well (1well = 3.8 cm <sup>2</sup> )
Duration of Culture	7 days
Additives	Y-27632 or CEPT was added at the time of seeding. Cells were cultured without the addition from the following day onward.

#### Result

No difference in cell morphology was observed between the addition of CEPT and Y-27632. The undifferentiated state was also maintained.

## Related Products

Wako Cat. No.	Product Name	Grade	Package Size
197-17571	StemSure® hPSC Medium Δ	For Cell Culture	100 mL
193-17573			100 mL×4
064-05381	Fibroblast Growth Factor (basic)(FGF-basic / bFGF / FGF2), Human, recombinant, Animal-derived-free(154aa)(powder)	For Cell biology	50 μg
068-05384			100 μg
060-05383			1 mg

Listed products are intended for laboratory research use only, and not to be used for drug, food or human use. / Please visit FUJIFILM Wako Laboratory Chemicals site: <https://labchem-wako.fujifilm.com/> / This leaflet may contain products that cannot be exported to your country due to regulations. / Bulk quote requests for some products are welcomed. Please contact us.

**FUJIFILM Wako Laboratory Chemicals site**  
<https://labchem-wako.fujifilm.com>



**FUJIFILM Wako Pure Chemical Corporation**  
 1-2, Doshomachi 3-Chome, Chuo-ku, Osaka 540-8605, Japan  
 Tel: +81 6 6203 3741 Fax: +81 6 6203 1999  
 ffwk-cservice@fujifilm.com

**FUJIFILM Wako Chemicals U.S.A. Corporation**  
 1600 Bellwood Road, Richmond, VA 23237, U.S.A.  
 Toll-Free (U.S. only): +1 877 714 1920  
 Tel: +1 804 271 7677 Fax: +1 804 271 7791  
 wkuslabchem@fujifilm.com

**FUJIFILM Wako Chemicals Europe GmbH**  
 Fuggerstr 12, 41468 Neuss, Germany  
 Tel: +49 2131 311 0 Fax: +49 2131 311 100  
 labchem\_wkeu@fujifilm.com

**FUJIFILM Wako Chemicals (Hong Kong) Limited**  
 Room 1111, 11/F, International Trade Centre, 11-19 Sha Tsui Road,  
 Tsuen Wan, N.T., Hong Kong  
 Tel: +852-2799-9019 Fax: +852-2799-9808  
 wkhk.info@fujifilm.com

**FUJIFILM Wako (Guangzhou) Trading Corporation**  
 Room 3003, 30/F., Dong Shan Plaza 69, Xian Lie Zhong Road,  
 Guangzhou, 510095, China  
 Tel: +86-20-8732-6381(Guangzhou) Tel: +86-21-6288-4751(Shanghai)  
 Tel: +86-10-6413-6388(Beijing)  
 wkgz.info@fujifilm.com